

## LIBRARY SECTIONS' LOCATION

### Ground Floor

Entrance lobby	Periodicals Section
Library Office	Reference Section
Director office	Thesis/Dissertation
Assistant Librarian office	Section
Circulation Counter	Bound Volume
Book bank	Collection
Newspapers & Magazines	Video /CD-ROM Section
Stack Area	
A.C. Reading Halls	
Acquisition Section	
Processing Section	
Display of New Arrivals	
(Outdoor Area)	

## SERVICES

1. Circulation Service (Issue / Return of books Main Library & Book Bank)
  2. Web OPAC : Open Sources Management System with RFID Services
  3. Reference Services
  4. Library Alert
  5. User Orientation
  6. Full furnished A.C Computer Lab
- \*and all other daily routine services

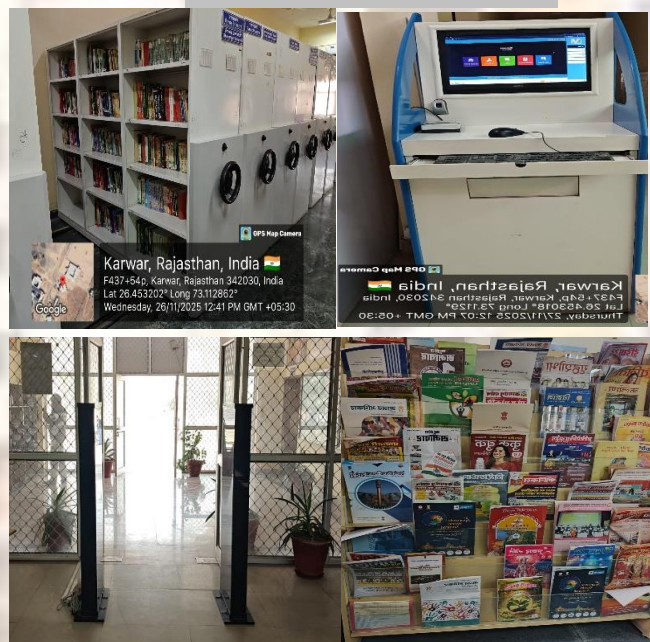
## DIGITAL INITIATIVE

1. Shodhganga Thesis  
<https://shodhganga.inflibnet.ac.in/handle/10603/295270>
2. ONOS: <https://www.onos.gov.in/ums/dashboard>
3. Manuscripts for Research (Offline)

## RESEARCH SUPPORT

- Citation Databases
  1. Web of Science
  2. Scopus
  3. Google Scholar
- Similarity Checking Tools
  1. Turnitin
  2. DrillBit

## PHOTO GALLERY



## CENTRAL LIBRARY

### KNOW YOUR LIBRARY



## CONTACT US

Dr. Rakesh kumar Sharma – Director  
 Sh. Anil Kumar Sharma – Librarian  
 Library Email: dsrraulibrary@gmail.com  
 Phone no.: 0291-2795338

Dr.A.P.J.Abdul Kalam Central Library,  
 Karwar,Nagour Road Jodhpur - 342037  
 (Rajasthan) INDIA  
 Website: <https://rauonline.in/>



## CENTRAL LIBRARY

The Central library is located in the Centre of the University, where visitors can approach easily. It is well equipped with the new and modern furniture including optimizers (stacks on tracks). The sitting area of the users is fully air conditioned. Each sitting area/ hall is having different reading cubicles for the users. Library Database has been computerized through **Integrated Library Management Software** and books are issued through **RFID System & Biometric Based**. It has 1500 Sq. feet plinth area in Ground floors. The reading halls of Central Library are air conditioned with glass partition Library has separate stack halls for books, periodicals (current and bound volumes), CD/DVD cassettes, Reference Section and Book Bank.

## NETWORK/INTERNET FACILITY

Library is having LAN and Wi-fi connectivity for Internet based services, which is operable on 24X7. The database & server of the library are maintained by the University IT department. Users are allowed to bring their own laptops.

## LIBRARY AUTOMATION AND COMPUTERIZATION

The Central library has a Library Management Software - Integrated (Open-Source Software) customized for University. The circulation services have also been automated through RFID enabled system.

## TIMINGS

09:00 AM to 08:00 PM (Monday to Saturday)

09:00 AM to 04:00 PM (Sunday)

\*Library will closed on Gazetted Holidays declared by the University (Library Timings may be changed as per requirement of users)

## HOLDINGS

### (Print and e-Resources)

(As on 27/11/2025)

- **Total Print Books** - 20623
- **Print Journals** - 10
- **E-Journals** (ONOS + Sub.) - 5000
- **Print Theses (P.G)** - 700
- **Print Theses (Ph.D)** - 2500
- **Print Magazines** - 22
- **Print Newspapers** - 9

## BORROWING PRIVILEGES

Category of Members	Student			
	UG/PG/PhD			
<b>General Books</b>	02 Books for U.G Students			
<b>No. of Books</b>	04 Books for P.G Students			
<b>Period of Loan</b>	15 Days			
<b>Book Bank</b>	05 Books (Only for SC &ST Students)			
<b>No. of Books</b>				
<b>Period of Loan</b>	Yearly			
Category of Members	Staff			
	Faculty	Administrative Officers (Group-A Only)	Non Teaching (Below Group-A)	
<b>No. of Books</b>	15	15	5	
<b>Period of Loan</b>	Yearly	Yearly	Yearly	

## OVERDUE CHARGES

Books are issued for 15 days from Main Library and for one Years from Book Bank, failing which late fine is applicable as per library rules.

## SEATING CAPACITY

The library has Fully A.C reading halls with seating capacity of **150 users** at a time.

## E-BOOKS & Print Books

Library has procured ebooks from different publishers (like: Pearson, McGraw Hill, T&F, DeGruyter, World Scientific, Springer, Sage, Choukhamba Ori., J.P Brothers, Shakshi Pub., Arvind Prakashan etc.)

## E-RESOURCES-ONOS (As on 27/11/2025)

ACM DIGITAL LIBRARY	Thieme	Taylor & Francis	ACS Chemistry for Life
OXFORD ACADEMIC	AIAA American Institute of Aeronautics and Astronautics	emerald insight	AMERICAN SOCIETY FOR MICROBIOLOGY
ASCE AMERICAN SOCIETY OF CIVIL ENGINEERS	AAAS AMERICAN ASSOCIATION FOR THE ADVANCEMENT OF SCIENCE	IOP Institute of Physics	ANNUAL REVIEWS
IEEE Xplore Digital Library	AMS AMERICAN MATHEMATICAL SOCIETY	AIP American Institute of Physics	APS physics
ScienceDirect	BENTHAM SCIENCE	ROYAL SOCIETY OF CHEMISTRY	BMJ Journals
PROJECT MUSE	CAMBRIDGE UNIVERSITY PRESS	ASME DIGITAL COLLECTION THE AMERICAN SOCIETY OF MECHANICAL ENGINEERS	Sage
SPIE	Wolters Kluwer	SpringerLink	WILEY Online Library
CSH Cold Spring Harbor Laboratory	ice publishing	IJ	

### Subject wise Books Detail

Ayurved	14402
Modern	4069
Homeopathy	749
Others	1403

### Language wise Book Detail

Sanskrit	447
Hindi	11195
English	8963
Urdu	3
Tamil	1
Rajasthani	10
Bodh	4